

2014



403, 4th Floor, Al-Rehman Center, Shakra-e-Faisal, Karachi
tel: +92 21 431 6242, +92 21 431 6575
fax: +92 21 455 4986
email: info@catalyst.pk
<http://www.catalyst.pk>



TRADE CAST

Version 1.0.2

TradeCast User Guide

Revision sheet

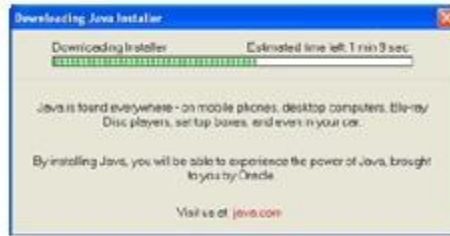
Revision History

Version	Date	Revision Description
V 1.0.1	21- JAN – 2013	
V 1.0.2	6 – FEB – 2014	Update

Java Installation

If Java is not installed in your computer, follow the procedure mentioned below



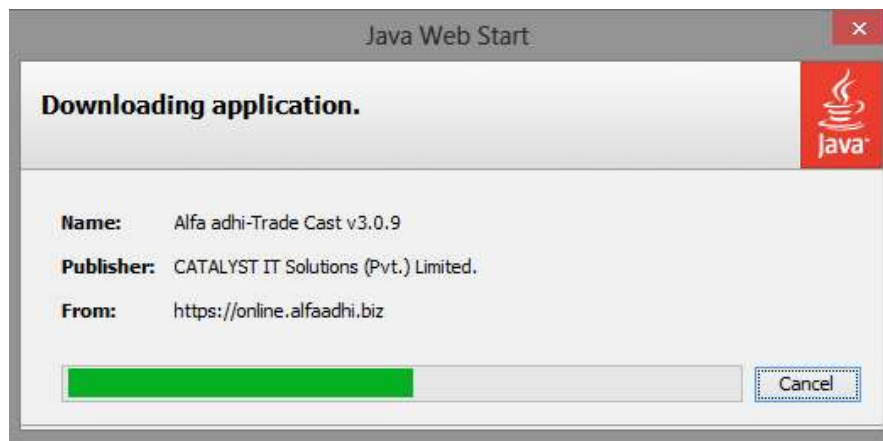
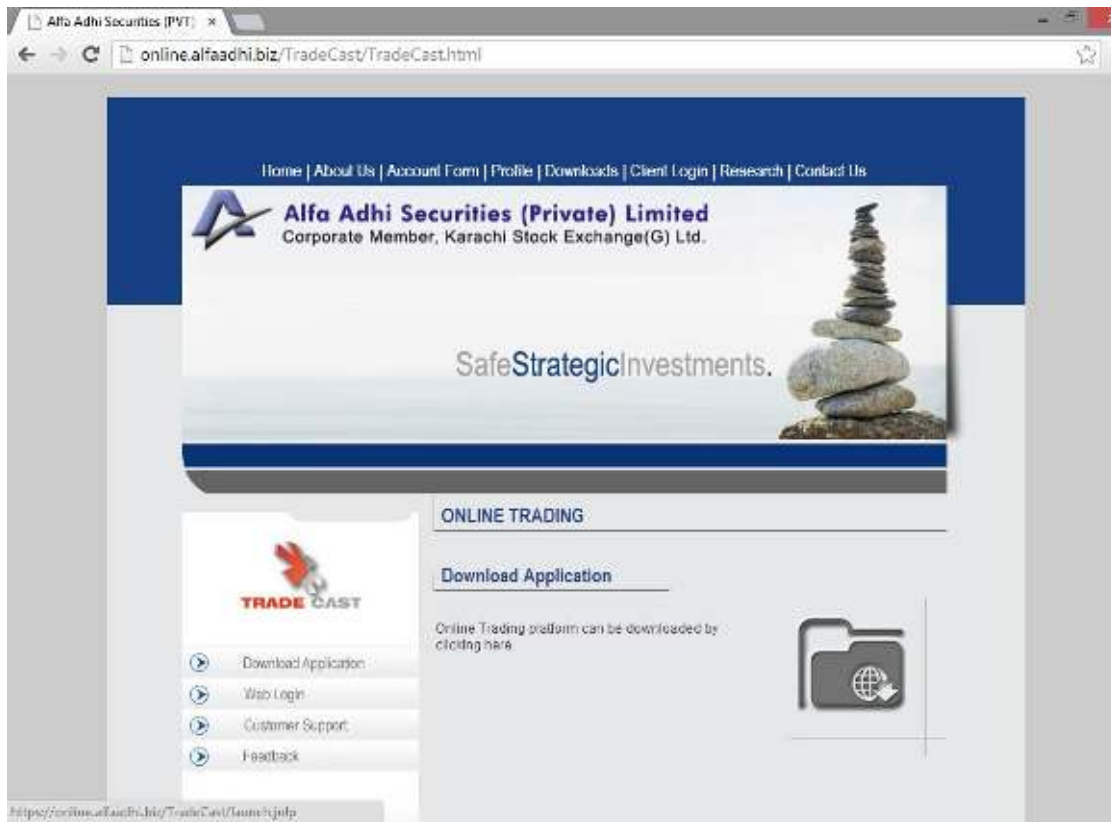


Login Screen

To download the application, enter the following URL in the browser,

<https://online.alfaadhi.biz>

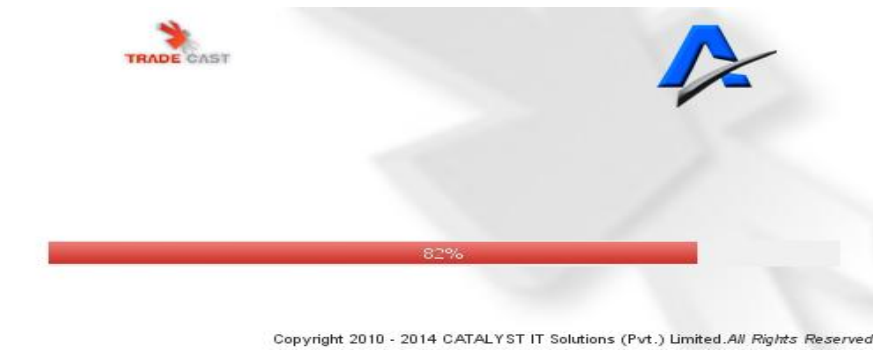
Click on download application icon,



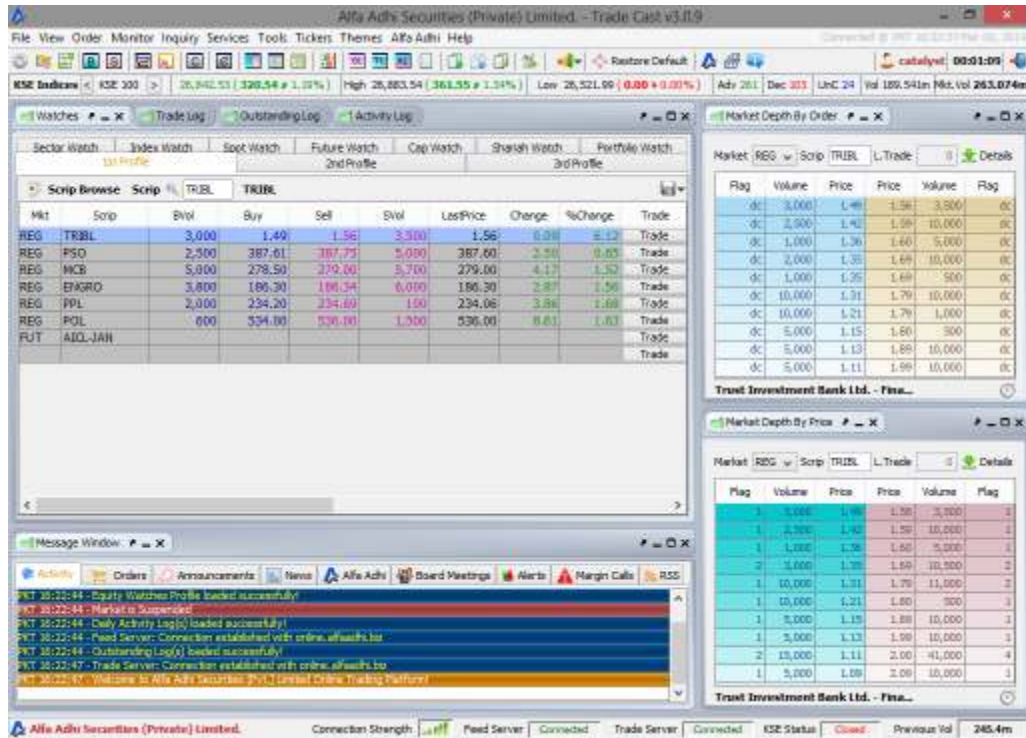
After downloading the application, following window will appear.



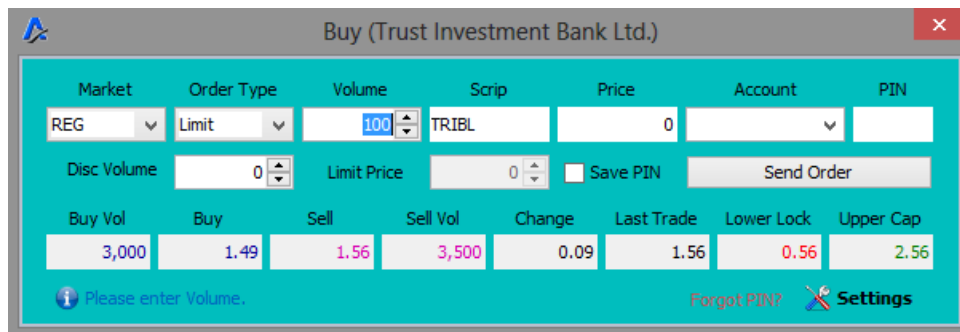
Enter Username and auto generated Password communicated on the provided email. Following window will appear,



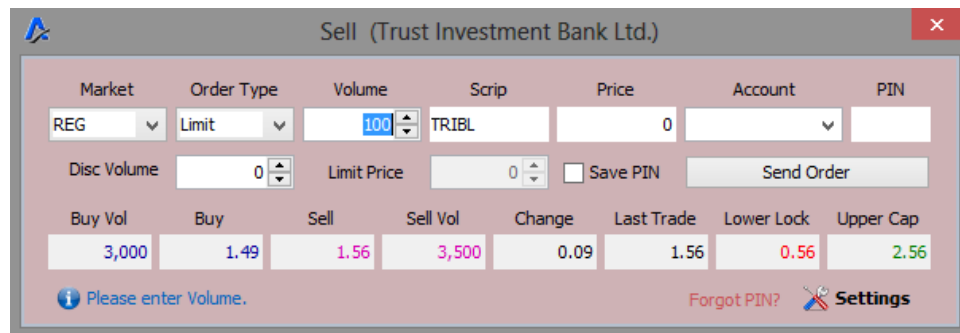
Auto-generated password only works on the first login. After login, password must be changed. Following window will appear after setting the password,



Buy Window (F4)



Sell Window (F5)



Short Sell Window (F8)

Short Sell (Trust Investment Bank Ltd.)

Market: REG | Order Type: Limit | Volume: 100 | Scrip: TRIBL | Price: 0 | Account: | PIN:

Disc Volume: 0 | Limit Price: 0 | Save PIN: | Send Order

Buy Vol	Buy	Sell	Sell Vol	Change	Last Trade	Lower Lock	Upper Cap
3,000	1.49	1.56	3,500	0.09	1.56	0.56	2.56

Please enter Volume. | Forgot PIN? | Settings

MBO (Ctrl + F2) & MBP (Ctrl + F3)

Market: REG | Scrip: FCCL | L.Trade: 15.59 | Details

Flag	Volume	Price	Price	Volume	Flag
dk	3,300	15.57	15.59	500	dk
dc	15,000	15.55	15.59	500	dc
dc	2,000	15.53	15.59	1,000	dc
dc	15,000	15.52	15.60	4,000	dc
dc	25,000	15.51	15.60	500	dc
dc	4,000	15.51	15.60	90,000	dc
dc	3,000	15.51	15.60	500	dc
dc	2,000	15.51	15.60	1,000	dc
127,000		15.53	15.60	99,500	
Tot. Vol.		Avg. Prc.	Avg. Prc.	Tot. Vol.	

Fuji Cement Co Ltd. - Constructio...

Market: REG | Scrip: FCCL | L.Trade: 15.59 | Details

Flag	Volume	Price	Price	Volume	Flag
1	1,500	15.57	15.59	2,000	3
1	13,000	15.55	15.60	121,500	11
1	2,000	15.53	15.61	2,000	3
1	15,000	15.52	15.62	500	1
1	36,500	15.51	15.63	6,000	3
9	130,500	15.50	15.64	500	1
1	5,000	15.49	15.65	177,000	13
1	3,000	15.47	15.66	1,500	2
256,000		15.50	15.63	336,500	
Tot. Vol.		Avg. Prc.	Avg. Prc.	Tot. Vol.	

Fuji Cement Co Ltd. - Constructio...

Top 30 Movers (Ctrl + T)

By Volume	By Price Increase	By % Increase	By Price Decrease	By % Decrease		
Scrip	Company	Last	Change	%Change	Volume	Trades
MJCF	Majid Leaf Cement Factory Ltd. - Cem...	29.80	0.70	2.30	25,374,500	1,198
LPCI	Lafarge Pakistan Cement United - Co...	11.41	-0.22	-1.89	19,461,500	2,063
BSP	Bank of Punjab - Commercial Banks...	10.81	-0.09	-0.81	13,210,000	2,010
BYCO	BYCO Petroleum Pak Ltd. - Oil and Ga...	10.75	0.17	1.54	10,675,000	2,581
NBP	National Bank of Pakistan - Commer...	10.66	2.50	4.98	9,756,000	1,896
DKCE	D. G. Khan Cement Co. Ltd. - Constr...	9.22	0.58	6.73	8,488,500	2,188
BARL	Bank Al-Falah Ltd. - Commercial Banks	28.26	0.30	1.07	7,920,000	544
YATPA	Pakistan Petroleum Co. Ltd. - Comm...	7.15	0.71	10.70	7,074,500	651
PIAA	Pakistan International Airline - Trav...	8.18	0.58	7.20	7,370,000	1,727
FOCL	Flour Cement Co. Ltd. - Construction	16.00	0.11	0.66	7,057,500	599
IRG	IRG Inhabant Ltd. - Support Services...	15.02	0.49	3.29	6,348,500	296
NHL	Nisbat Mills Ltd. - Personal Goods (Tex...	128.40	0.58	0.42	6,197,000	2,462
PZB	Payal Bank Limited. - Commercial Ban...	12.79	0.06	0.47	6,148,500	500
AOL	Adaniya Insurance Co. Ltd. - Non-Lif...	12.12	0.93	2.16	5,957,000	2,000
PAEL	Pakistan Electron Ltd. - Household Go...	25.33	0.48	2.42	5,792,500	1,469
EMRT	Engro Fertilizers Limited. - Sectors	57.38	1.09	1.94	5,195,500	3,088
KEI	K Electric Limited. - Sectors	5.21	0.04	0.63	5,194,500	721
AKBL	Akbar Bank Limited. - Commercial Ban...	15.17	0.80	5.49	5,109,000	951
KIML	Kohistan Ice Mills Ltd. - Personal Goo...	30.01	1.13	3.84	4,885,500	614
JSCIL	Jahangir Siddiqui & Company Ltd. - Fi...	10.24	0.26	2.63	4,463,000	1,150
DCI	Deewan Cement Limited. - Construction...	9.31	-0.03	-0.31	4,282,000	617
ENGRD	Engro Corporation Limited. - Chemical...	285.12	2.87	1.57	3,615,000	3,001
HUBC	Hub Power Company Limited. - Electri...	59.40	1.75	3.04	3,491,000	517
AWN	American Limited. - Sectors	19.35	0.89	4.82	3,313,000	950
ANL	Asgard Ninc Limited - Personal Goods ...	7.89	0.10	1.28	3,173,000	772
ENGGG	Engro Foods Limited. - Food Producer...	103.01	2.57	2.54	3,161,500	1,091
PSO	Pakistan State Oil Co Ltd. - Oil and Ga...	287.39	2.50	0.86	2,907,600	3,523
DFML	Devan Farooque Motors Limited - Aut...	5.06	0.40	7.33	2,905,500	556
JNG	Japan Power Generation Ltd. - Electri...	3.43	0.12	3.64	2,686,500	546
NBR	NBR Bank Limited. - Commercial Banks	2.25	0.04	1.81	2,644,000	267

Shortcuts

Shortcuts for Logs are shown in the following window,

The screenshot displays the TradeCast v3.0.9 application window for Alfa Adhi Securities (Private) Limited. The interface includes a menu bar (File, View, Order, Monitor, Inquiry, Services, Tools, Tickers, Thomas, Alfa Adhi, Help), a toolbar, and a main workspace divided into several panels:

- KSE Indices:** Shows market indices with values like 26,843.53 (320.54 ↑ 1.19%) and High 26,863.54 (30).
- Scrip Browse:** A table listing various scrips with columns for Mkt, Scrip, BVol, Buy, Sell, SVol, LastPrice, Change, %Change, and Trade. Visible scrips include TRIBL, PSD, MCB, ENGRD, PPL, POL, and AZL JAN.
- Market Depth:** Two panels showing order book details for 'Trust Investment Bank Ltd. - Fina...' with columns for Flag, Volume, Price, and L.Trade.
- Message Window:** A log of system messages, including connection status updates for the Feed Server, Trade Server, and KSE Status, and market suspension notices for the IFT and KSE.
- Activity Panel:** A bottom bar with icons for Activity, Orders, Announcements, News, Alfa Adhi, Board Meetings, Alerts, Margin Calls, and RGS.

The status bar at the bottom indicates 'Connection Strength' as 'Good', 'Feed Server' as 'Connected', 'Trade Server' as 'Connected', and 'KSE Status' as 'Good'. The Previous Vol is shown as 246.4m.

Information about all the shortcuts can be found by pressing “F1”.
Following window will appear having all the shortcut details,

Window	Shortcut keys
About Trade Cast	Ctrl + A
Account Statement	Alt + A
Activity Log	Ctrl + F7
Bunch Order	F6
Buy	F4
Cancel	F11
Cash Withdrawal Request	Alt + R
Cash Withdrawal Statement	Alt + W
Change Order	F10
Change Password	Alt + P
Change PIN	Alt + C
Daily Trade Report	Ctrl + F8
Detailed Quote	Ctrl + F4
Indices Summary	Ctrl + E
Exposure Watch	F2
Top 30 Movers	Ctrl + T
Watches	F12
Logout	Alt + F4
Market Depth By Order	Ctrl + F3
Market Depth By Price	Ctrl + F2
Message Window	Ctrl + F12
Outstanding Log	Ctrl + F5
Preferences	Ctrl + P
Restore Default Layout	Ctrl + R
Scrip Browse	F3
Sector Performance	Ctrl + S
Sell	F5
Shortcut Keys	F1
Short Sell	F8
Trade Log	Ctrl + F6

Cash Withdrawal Request

Cash Withdrawal Request
✕

Please select the account for which you wish to make Cash Withdrawal

Account No PIN

Cash Withdrawal Statement Forgot PIN?

Available Amount	Withdrawal Amount	Remaining Amount
PKR <input type="text"/>	- <input type="text"/>	= <input type="text"/>

Cheque Delivery
Please select this option if you would like us to send cheque at your registered Address.

Cheque Pickup Please select
Please select this option if you would like to pickup cheque from our branches.

Please enter your comments (if required)